

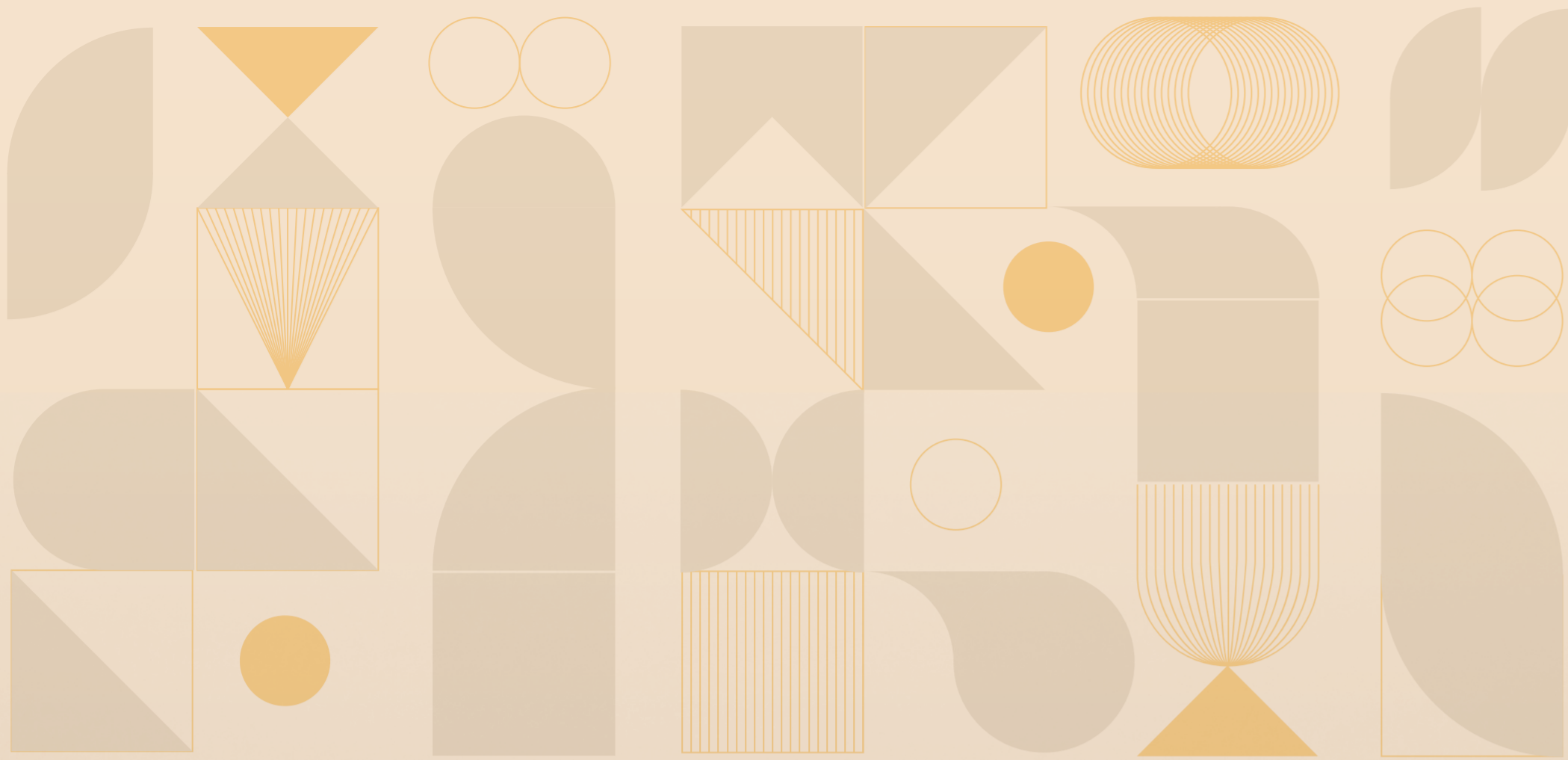
 **HAWARE**

**MY FIRST
HOME** 

NAVI MUMBAI - SHIL

**BADE SAPNO KI
AASAAN SHURUAAT**

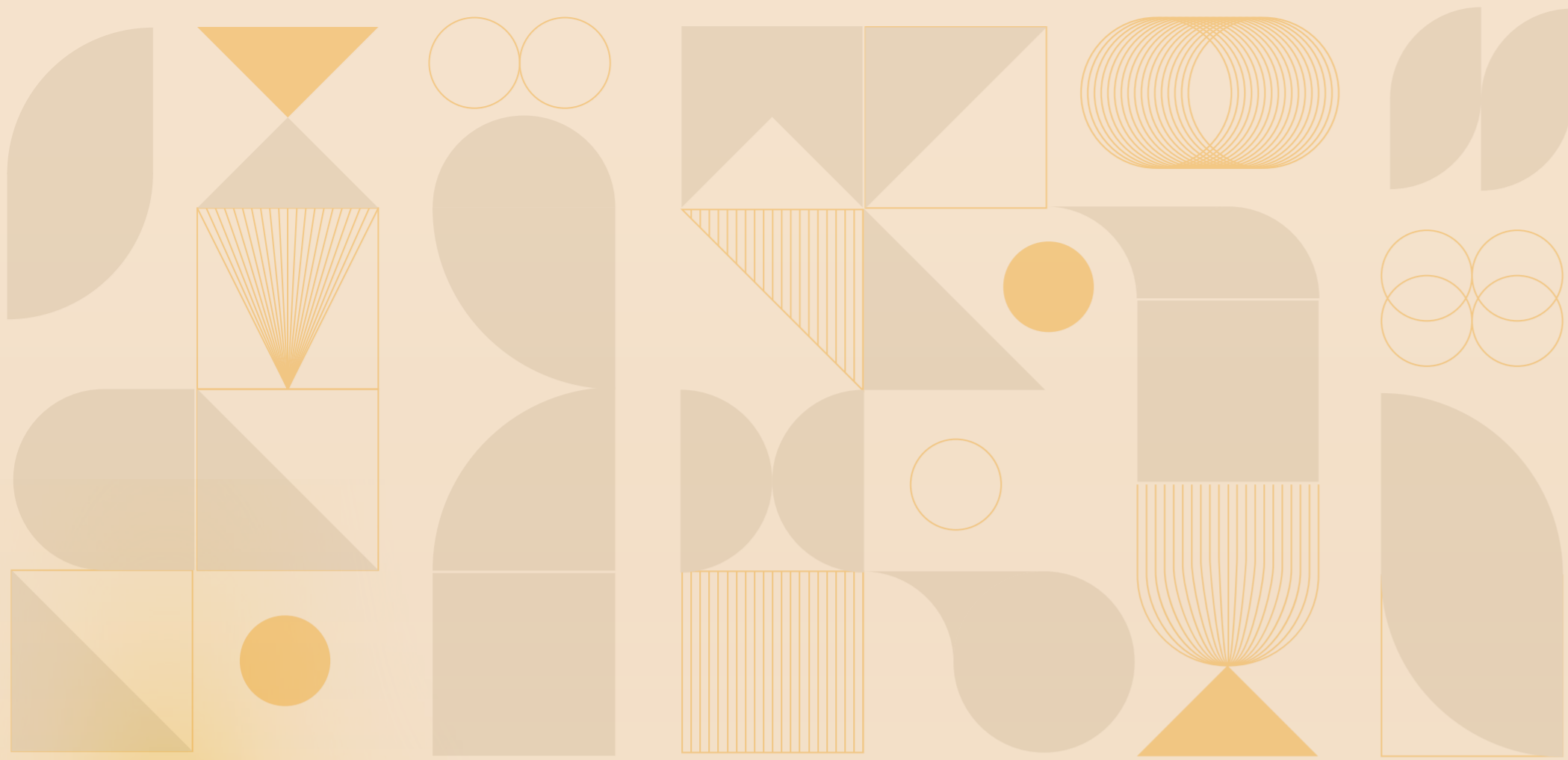




A BIG FIRST STEP, A BETTER FIRST HOME

One of the first things we learn to draw as a child is a house. It is also one of the first big dreams, we dream. This is what makes owning your first home special. It is not just another purchase. It is the joy of turning a childhood dream into a beautiful reality. It is the excitement of starting a new chapter of life, written all by you. There is a different kind of feeling to living in your own house. While life remains the same, everything starts to feel more personal, more yours.





ENTER YOUR OWN SLICE OF PARADISE

Your first home should be a reflection of all that you are and all that you wish to be. At My First Home, you will feel like you always belonged, right from the moment you take your first step. While owning your first home can be as overwhelming as it is exciting, we make this big step as easy as possible for you. All you have to do is savour every single moment, from the happiness of choosing your first house to the excitement of fixing the first nail into the wall of your home. After all, it is these core memories that will stay with you for a lifetime and will be shared over dinner years down the road.



**EXPERIENCE ULTIMATE
CONNECTIVITY
WITH PRIME LOCATION**



HAWARE
MY FIRST HOME
 NAVI MUMBAI - SHIL

N M I A
 U P C O M I N G
 A I R P O R T

- Mumbra Station - 7 minutes
- Diva Station - 10 minutes
- Kopkhairne Station - 10 minutes
- Ghansoli Station - 10 minutes
- IKEA
- Inorbit Mall Vashi
- Icon Hospital
- Vashi Sector 30
- APMC Vashi Turbhe
- Virar - Alibaug Multimodal Corridor

Map Not to scale,
 For representation purpose only

URBAN LIFESTYLE IN THE PRIME LOCATION

Welcome to an address that offers you the best of the city, right at your doorstep. Life in ShilPhata will feel like the ultimate urban experience, covered in warm, homely comfort. From vibrant markets to modern offices, you'll be a step closer to all your daily needs while also a step away from the bustle of everyday life. It is this which makes ShilPhata the perfect place to call home.

UPCOMING INFRASTRUCTURE

- Airoli-Katai Naka Tunnel
- Virar - Alibaug Multimodal Corridor
- Metro Line 12 (Orange Line)
- Metro Line 14 (Magenta Line)
- Ahmedabad - Mumbai Bullet Train
- Navi Mumbai International Airport

COMMERCIAL HUB

- LTI Mind Tree- 15 Min
- Millennium Business Park- 15 Min
- Reliance Corporate Park- 15 Min
- APMC Vashi Turbhe- 20 Min
- Vashi Sec - 30- 20 Min

MAJOR ROADWAYS

- Ghansoli - Mahape- Shilphata Road - 10 min
- Kalyan - Shil Road - 10 min
- Thane - Belapur Road - 10 Min
- Mumbra Bypass Road - 5 min

HEALTHCARE

- GHC Hospital- 5 Min
- Medford MultiSpecialty Hospital- 10 min
- Kokilaben Dhirubhai Ambani Hospital - 20 min
- Sai Snehdeep Hospital- 20 min
- Bijankur Hospital- 15 min
- Icon Hospital- 15 min

RAILWAY STATION

- Ghansoli Station - 19 min
- Diva Station- 16 min
- Mumbra Station - 16 min
- Airoli Station - 24 min
- Koperkhairne Station - 20 min
- Dombivali Station - 37 min

EDUCATION

- Om Public School- 10 Min
- Dosti Foundation School- 5 Min
- Lodha World School - Palava- 15 Min
- Rizvia Convent Primary School- 2 Min
- MM Public School- 2 min
- SNM School & Jr. College- 5 Min

ENTERTAINMENT & SHOPPING

- Xperia Mall- 15 Min
- D-Mart Mahape- 10 min
- IKEA- 20 min
- Inorbit Mall Vashi- 20 Min



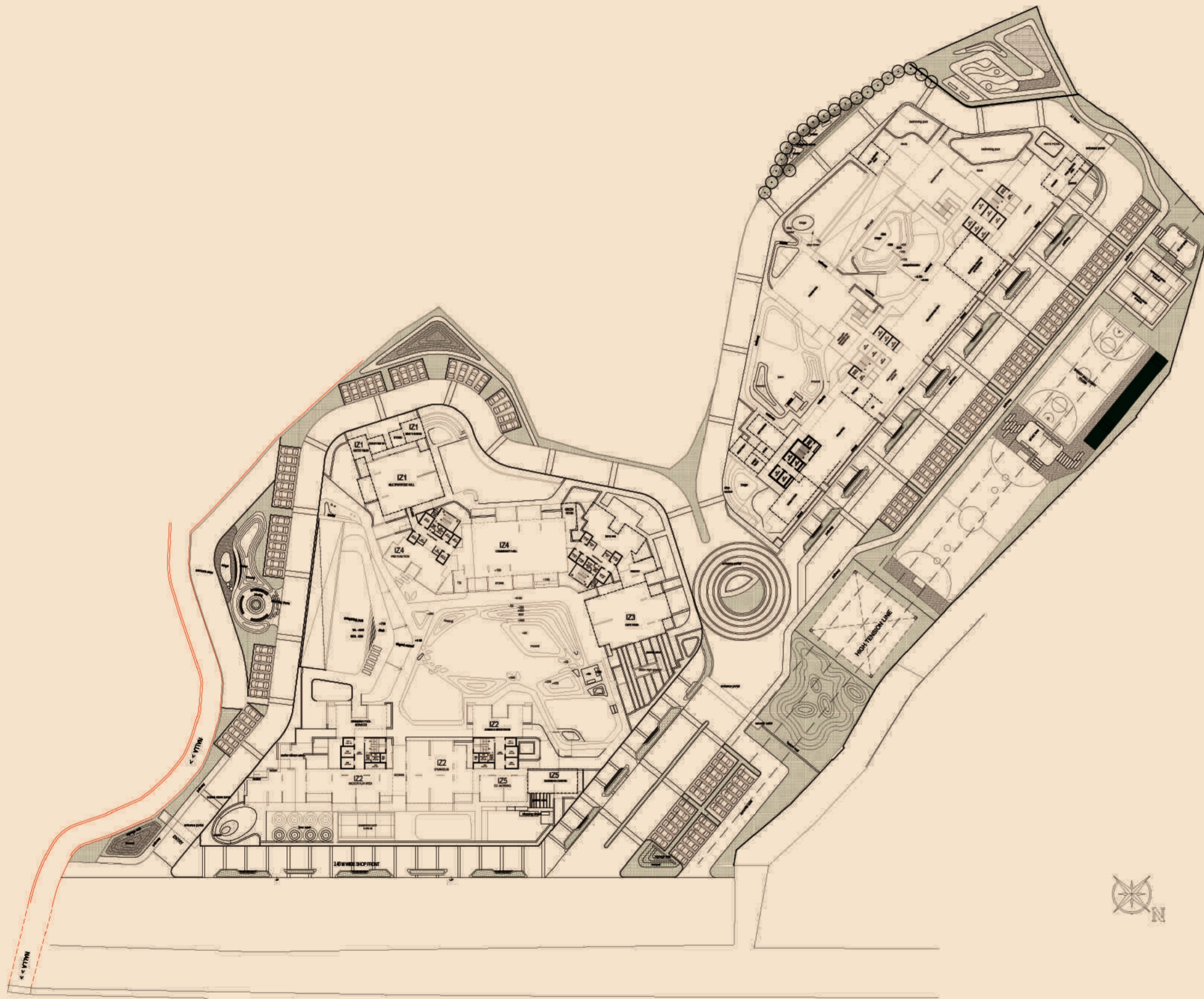


EXPERIENCE THE SERENE HARMONY OF NATURE

Welcome to ShilPhata, where the tranquility of nature coexists harmoniously with the conveniences of urban living. Nestled amidst lush greenery, this idyllic address offers you a unique blend of peaceful retreat and modern accessibility. You'll find yourself seamlessly connected to the city's pulse, yet surrounded by the soothing embrace of nature. Discover the perfect balance between urban vibrance and natural serenity, making ShilPhata the ideal place to call home.

MASTER PLAN LAYOUT

GROUND FLOOR: LANDSCAPE LAYOUT

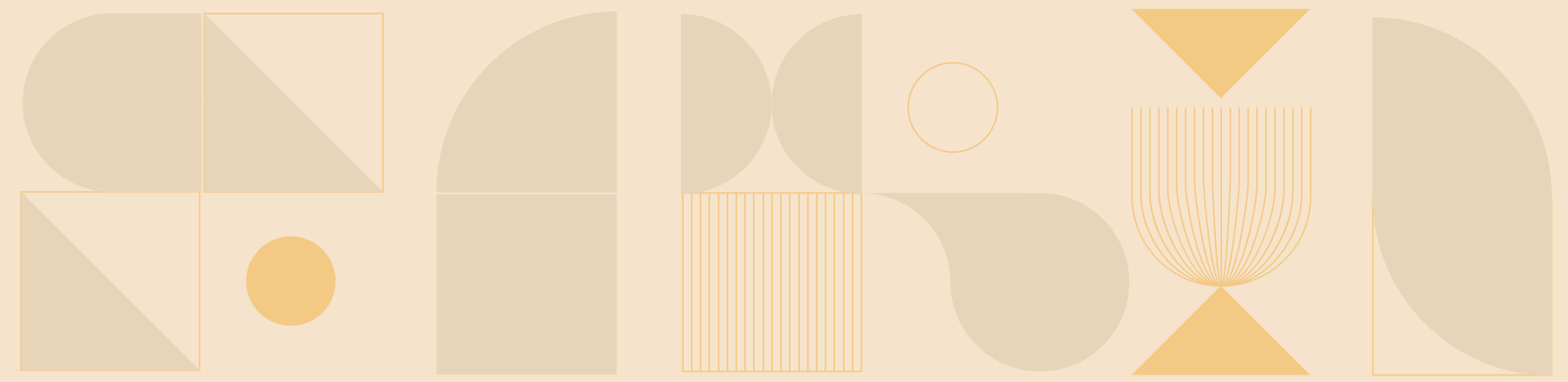


AMENITY FLOOR PODIUM LEVEL: LANDSCAPE LAYOUT





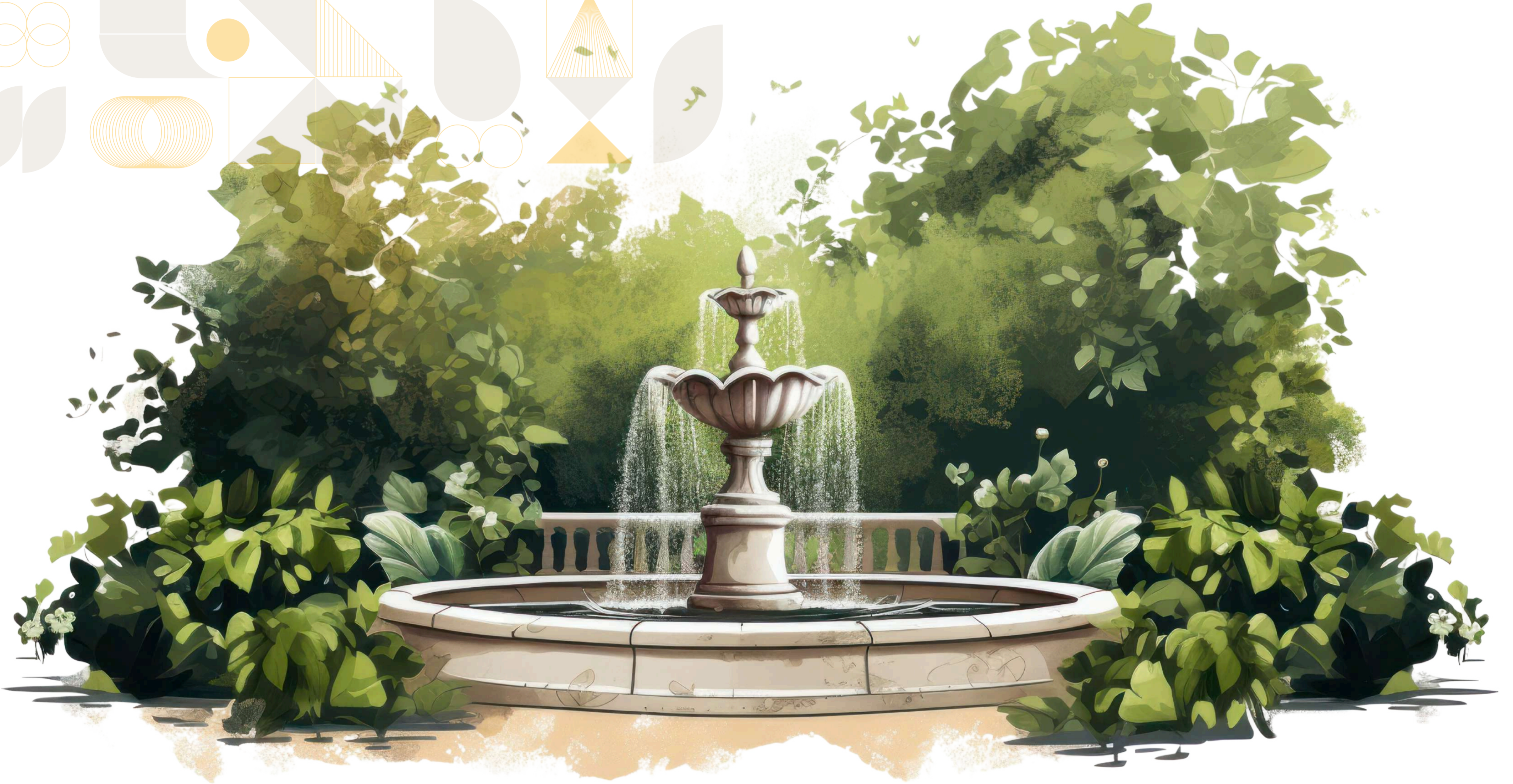
Artist's Impression



A FRESH START AWAITS YOU

A new lifestyle of comfort, convenience and pure indulgence awaits you at your new home. Here, you won't feel the need to step out of your home with every possible amenity right at your disposal. Your indulgent lifestyle starts from the township entrance itself, with an array of retail stores ready to fulfil your shopping needs. Inside the township every minute of your day is well taken care of, from a well-equipped gymnasium for your fitness requirements to work spaces for attending meetings. It also ensures that your family has a great time with kids' play areas, entertainment zone and much more.

There is a certain magic to living in a place that offers you the very best of the world and calling it home. At Haware My First Home, this magic comes to life, opening a world of possibilities for you and your family. Beautifully designed landscapes, clear blue swimming pools, thoughtfully curated recreational areas, fun-filled children playgrounds, all come together to welcome you to your new home. This is your own little world, designed to give you a wholesome life.



**INDULGE IN 50+
WORLD-CLASS AMENITIES**

Representative Image

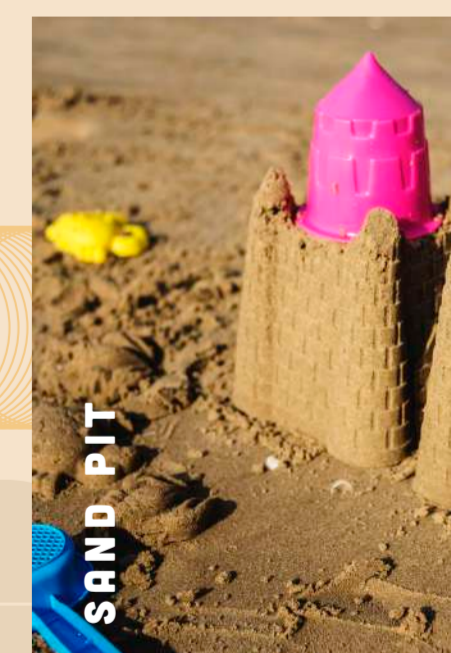
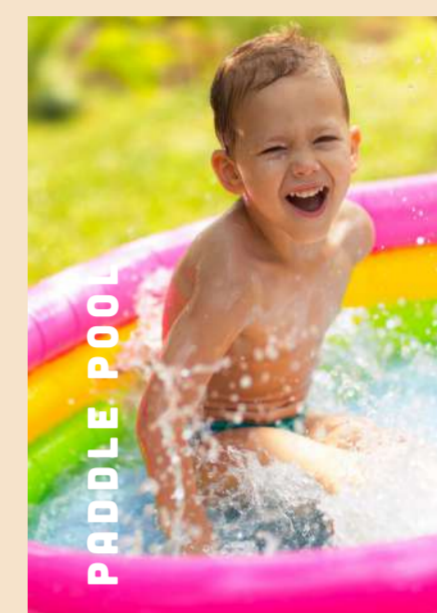
Discover A Lifestyle That Nurtures Your Body And Mind.

HEALTH



Fuel Your Passion For An Active Life.

SPORTS



Representative Image

Representative Image



**A PLACE YOU'LL LOVE
TO CALL 'HOME'**

Where Every Corner Reflects Comfort

LIVING ROOM

- 10 feet floor to ceiling height
- Full height large windows



Representative Image

Your Throne Of Absolute Leisure

MASTER BEDROOM

- 1 & 2 BHK homes of exceptional quality



Representative Image

Colourful Kingdom For The Young Ones

KIDS' ROOM

- Space efficient layouts

Panoramic Views Of The Horizon

BALCONY VIEW

- G + 34* storey tower
- Uninterrupted hill and city views



Representative Image

Representative Image

Where Every Meal Becomes A Masterpiece

KITCHEN

- Dry balcony and storage loft in every home
- Branded fitments and finishes



Representative Image

DEVELOPMENT HIGHLIGHTS

- 7.18 acres development
- Aluminium form work
- 2 -acre green open space
- High-street retail plaza
- 2 lac sq.ft. lifestyle amenities
- Expansive rooftop recreational zone
- Ample car & bike parking



Representative Image



**THOUGHTFULLY DESIGNED,
BY THE FINEST IN THE BUSINESS**

ABOUT HAWARE PROPERTIES

With over 29 years of expertise, 160+ successful projects and more than 45,000 happy customers, Haware Properties is one of the leading and pioneering real estate developers in Mumbai, Thane and Navi Mumbai.

Haware Properties began its exceptional real estate journey with acclaimed residential projects in Navi Mumbai's Kharghar node. The Group leads by the mission of providing quality housing for all. After three decades of real estate brilliance, it has an intuitive understanding of customer needs and constantly identifies new city hubs of development to meet this demand. When it comes to serving customers, the Group is renowned for timely delivery of high-quality residential and commercial projects.

Under the visionary leadership of Dr. Suresh Haware, the group's Chairman and Managing Director, Haware Properties pioneered Nano Housing, a project aimed to solve India's housing shortage. The Haware brand stands for trust, reliable quality and constant punctuality and leads every project with these qualities at the forefront. With a steady, ambitious vision the group aspired to become India's largest provider of high-quality, affordable homes by creating value beyond expectations for customers, investors, partners and associates.

THE BOARD



Dr. Suresh Haware (Chairman & Managing Director):

Dr. Suresh Haware is a world-renowned business leader and real estate expert. Having completed his Phd in Global Real Estate and Affordable Nano Housing from the University of Mumbai, he is also recognised as the Pioneer of Nano Housing in India. He has been awarded with more than 100 different national and international awards for his work in the real estate sector.

Before joining the group, Dr. Haware worked with the Department of Atomic Energy (DAE) at the Bhabha Atomic Research Centre (BARC) for 27 years as a Nuclear Scientist. He is the current Chairman of Shri Sai baba Sansthan Trust, Shirdi.



Mr. Amit Haware (CEO & Jt. Managing Director):

A seasoned expert in real estate planning, Mr. Amit Haware is deeply involved in architectural and construction strategizing. He has notably led the fastest project execution in Mumbai, successfully completing the construction of the Haware Citi project with over 2000 houses, in less than three and a half years. Additionally, he manages the marketing and sales department, taking charge of sales responsibilities across all group projects. Mr. Amit Haware's exceptional execution and delivery of high-quality affordable NANO housing projects in Mumbai have earned him numerous prestigious national and international awards. He was honored with the esteemed "India's Most Promising Brand Award" in London by World Consulting & Research Corporation in association with Ernst & Young, Artists in Concrete Award, Youth Icon award, Vishwakarma Award, Rashtriya Rattan Award from International Study Circle amongst others.

He currently serves on the Board of Maharashtra State Board of Technical Education. He is also one of the board members of the Central Hindu Military Education Society, Nashik.



Mr. Amar Haware (Executive Director & CFO):

Mr. Amar Haware is the energetic leader of the Haware group and handles the responsibility of leading the construction, finance and accounting departments of the group. He is also actively involved in the planning and execution of all of the group's projects with a focus on ensuring highest quality of construction.

He derives great insights from his experience of working with leading national and international financial institutions across multiple sectors. With his diverse experience in finance, he astutely manages the cash flows of the group with confidence and precision.



SCAN FOR DETAILS



This registration is granted under section 5 of the Act to the following project under project registration number: **P51700052794**

Project: Haware My First Home Shil Phata Phase 1 Bldg 1, Plot Bearing / CTS / Survey / Final Plot No.: Plot no 83/1,84/2,85/1A,85/2A,85/2B at Thane (M Corp.), Thane, 410203.

Disclaimer: This advertisement is purely conceptual and purchase in this project shall be governed by the terms and conditions of the Agreement for Sale. While every reasonable care has been taken in fashioning this advertisement, Any intended recipient/reader/viewer/interested party should verify all the information with the Promoter prior to purchase in the project, the Promoters cannot be held responsible for any inaccuracies or omissions. The Promoters shall not be responsible for any action taken by the intended recipient/reader/viewer/interested party relying on such material/information on the Website and brochures and any information is provided by Real Estate Agent/Broker/Channel Partner without independently verifying with the Promoters.